

MANX BAT GROUP



BAT SPECIES

The Manx Bat Group has now recorded NINE species of bats (listed below) in Island by undertaking surveys, bat walks and keeping records.

Lesser Horseshoe
(*Rhinolophus hipposideros*)
Daubenton's
(*Myotis daubentonii*)
Whiskered
(*Myotis mystacinus*)

Natterer's
(*Myotis nattereri*)
Leisler's/Lesser Noctule
(*Nyctalus leisleri*)
Nathusius's Pipistrelle
(*Pipistrellus nathusii*)

Common Pipistrelle
(*Pipistrellus pipistrellus*)
Soprano Pipistrelle
(*Pipistrellus pygmaeus*)
Brown Long-eared
(*Plecotus auritus*)

WHO ARE WE?

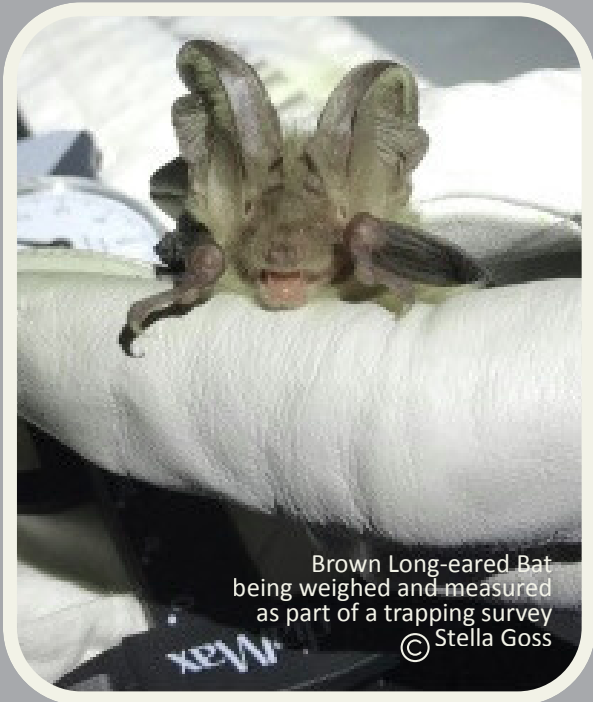
The Manx Bat Group works to protect and conserve bats across the Isle of Man. All bats and their roosts are safeguarded under the Wildlife Act 1990. Once in steep decline due to habitat loss and changes in farming, bats now benefit from growing appreciation, but still depend on conservation for survival.



A maternity roost of Brown Long-eared Bats
© Louise Samson

BAT SURVEYS

Surveys use bat detectors to translate ultrasonic calls into sounds we can hear. These calls can be recorded and analysed with spectrograms to help identify species. With the right licence, bats may also be caught and examined for confirmation.



Brown Long-eared Bat being weighed and measured as part of a trapping survey
© Stella Goss

DID YOU KNOW?

Bats are the only flying mammals and among the few to navigate and hunt with sound. All British species eat insects and, being highly sensitive to change, are key indicators of insect populations and ecosystem health.



Members of the Manx Bat Group inspecting a bat box, under licence, with an endoscope
© Louise Samson

WE NEED YOUR SUPPORT!

The Bat Group is a charity funded by memberships and donations. Support us by joining, coming to meetings, or joining a bat walk!

BAT HELPLINE

Call our Bat Helpline for advice on 07624 366177. We care and release 10-20 bats a year!

We also survey sites for planning applications, protecting roosts and planning for bats' future needs. We install and monitor bat boxes across the Island and, under licence, check potential hibernation sites.

