

# BUGS IN OUR DRAWERS

## Caring for the Manx National Heritage Entomology Collections

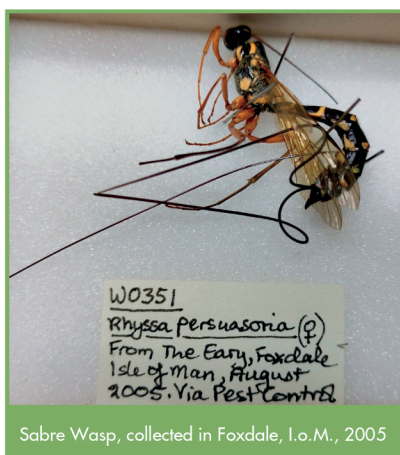
### The Numbers

A significant number of the objects at the Manx Museum has in its care are from the natural science collection.

Within that, the entomology section is the largest part, containing over 78,000 insect specimens mounted on pins.

This assemblage represents a key hub connecting some of the most pressing issues of our time, like the biodiversity and climate crisis.

It provides historic reference material, contributing to the conservation and restoration of our environment.



Sabre Wasp, collected in Foxdale, I.o.M., 2005

### The Project

Manx National Heritage has started work on a long-term project to safeguard and improve access to these specimens, protecting them for the future.

We have two regular volunteers that are trained to handle the collection. They are updating the scientific names, reordering collection taxonomically, and whilst doing so, they are also moving material to new conservation grade cabinets.

An important part of the project is also deaccessioning. Any material that is non-Manx will first be offered to museums with an established entomology collection in the county the specimens are from, or to a larger national museum.

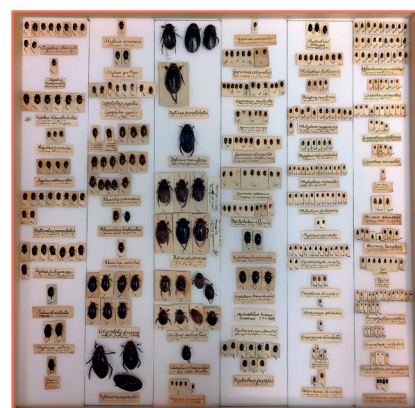


Death's-head Hawkmoth from the W.S. Cowin collection,

### The History

The Manx Museum is just over one hundred years old, but some of our specimens are older than that, obtained from private/amateur collectors dating to the late 1800's and early 1900's. Harold Bailey is one such collector and we purchased his beetle collection in 1910 for £18.

The old entomology cabinets housing the collection are in poor repair, not providing the environmental buffering or protection from museum pests that they should.



Harold Bailey collection of beetles



Drawer with broken glass lid

### The Results

Through some generous donations, we already had four new cabinets to begin transferring the collection into, and we have just been granted the funds to obtain ten more.

The first cabinets are nearly full, so we are really grateful to all of the donors that have allowed this project to continue without interruption. Once the collection has been rehoused and digitised, it will be much more accessible. Watch this drawer!



Fred BenHneatr cooll eBcattioleny, colllecteiodn t containing many tiny beetles



Manx National Heritage  
Eiraght Ashoonagh Vannin  
Isle of Man Registered Charity No 603

