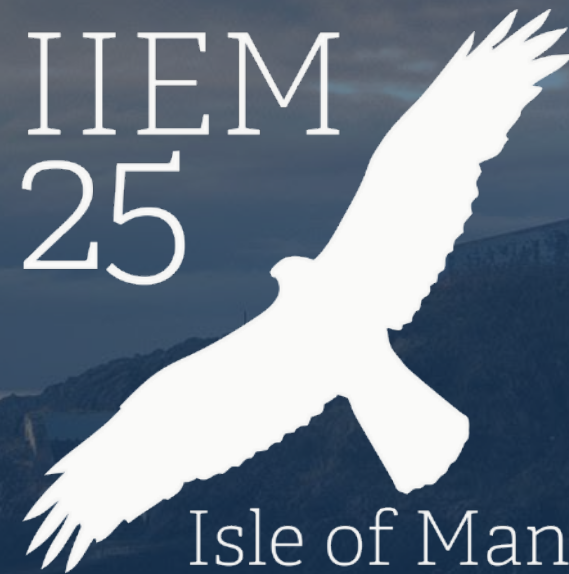


IIEM
25



Isle of Man

Balearic Shearwater monitoring programme in the norman-breton gulf

Adrien Lambrechts, French Biodiversity Agency

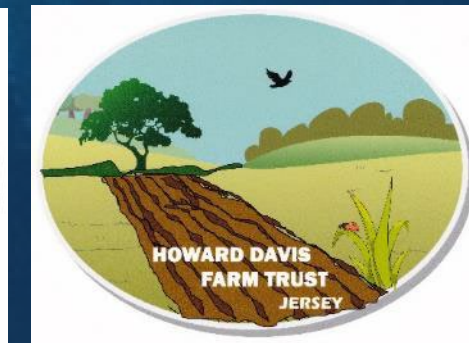
Cris Sellares, National Trust for Jersey



Management partners



Sponsors and collaborators



Technical advisor



The Balearic Shearwater

EUROPE'S RAREST AND **MOST THREATENED**
SEABIRD

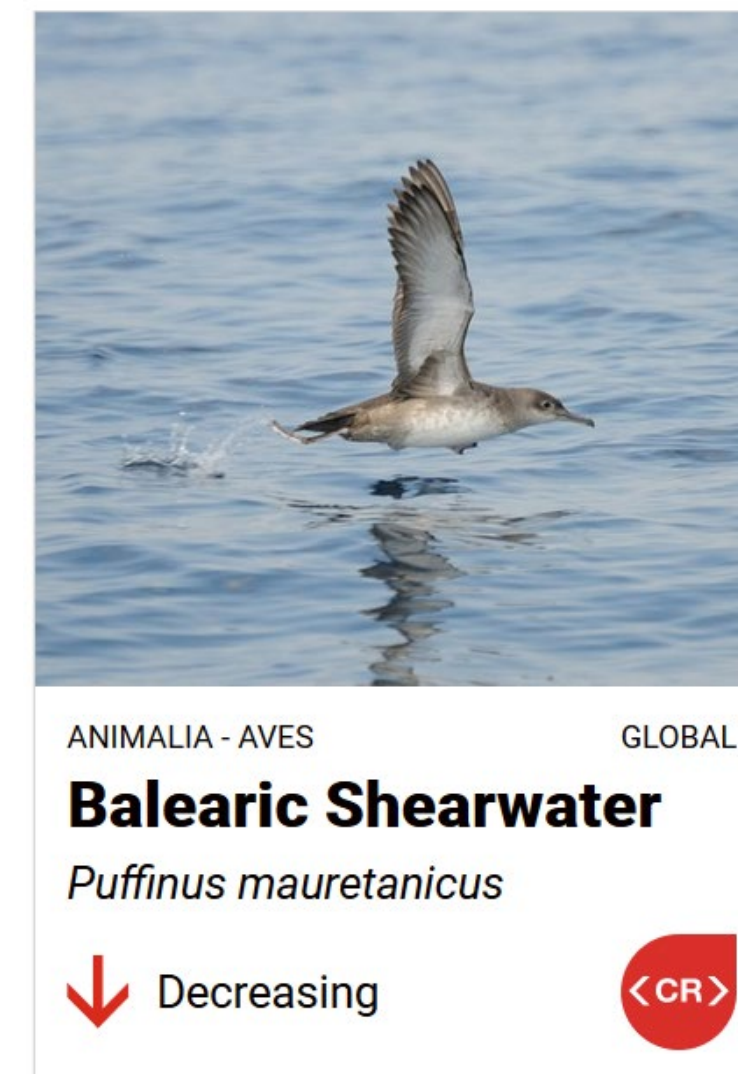
Total population ~ 25,000
Breeding population ~ 3,000 pairs

UK RED LIST - CHANNEL ISLANDS RED LIST
CRITICALLY ENDANGERED (UN RED LIST).

*Population trend =14% / year
-> Extinction expected by 2050*

Main factors driving this strong decline:

- *Adult mortality at sea: bycatch in fisheries*
- *Adult mortality at colony (cats, rats)*



ANIMALIA - AVES

GLOBAL

Balearic Shearwater

Puffinus mauretanicus

↓ Decreasing

<CR>

A French National Action Plan



Dedicated to the most threatened species

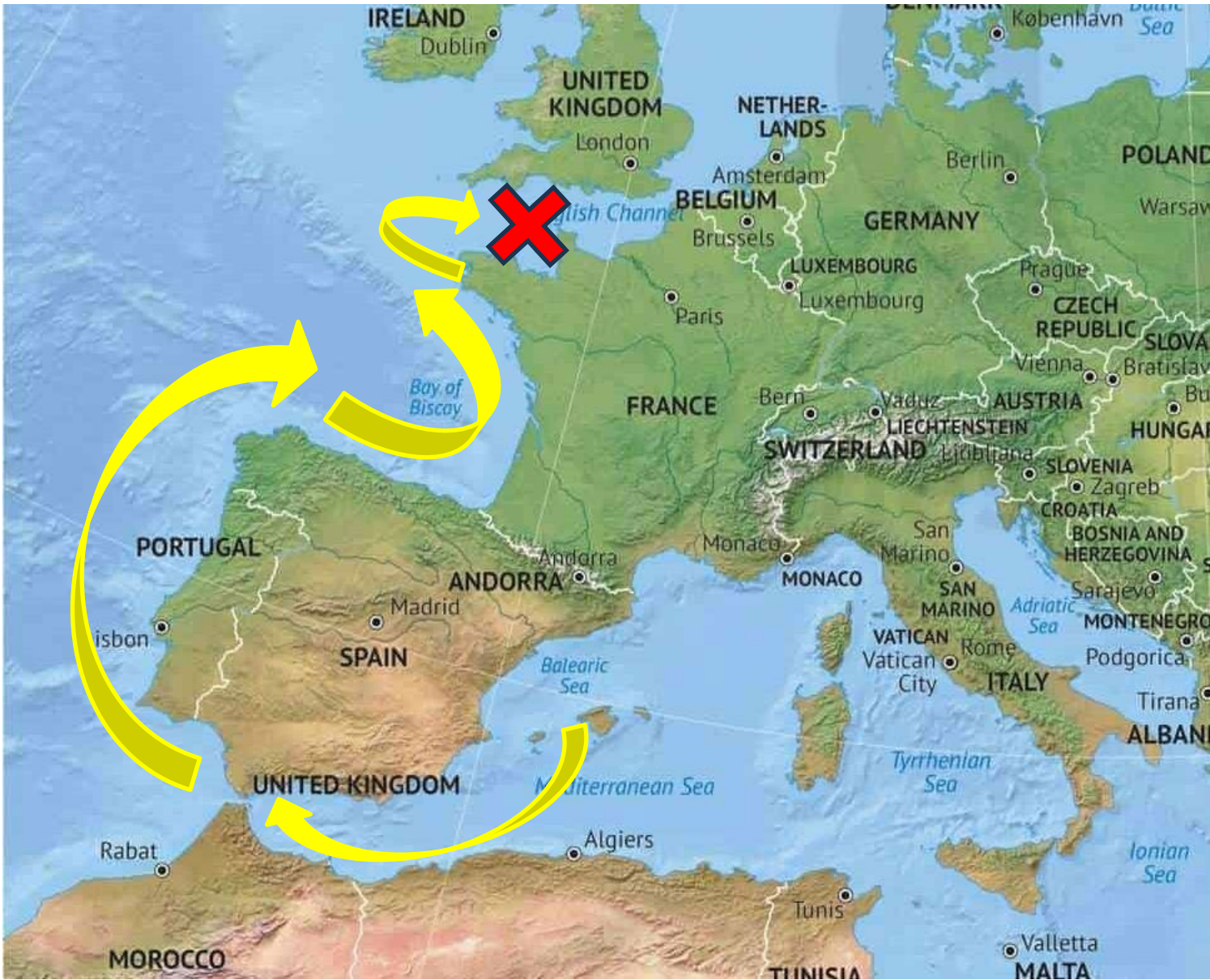
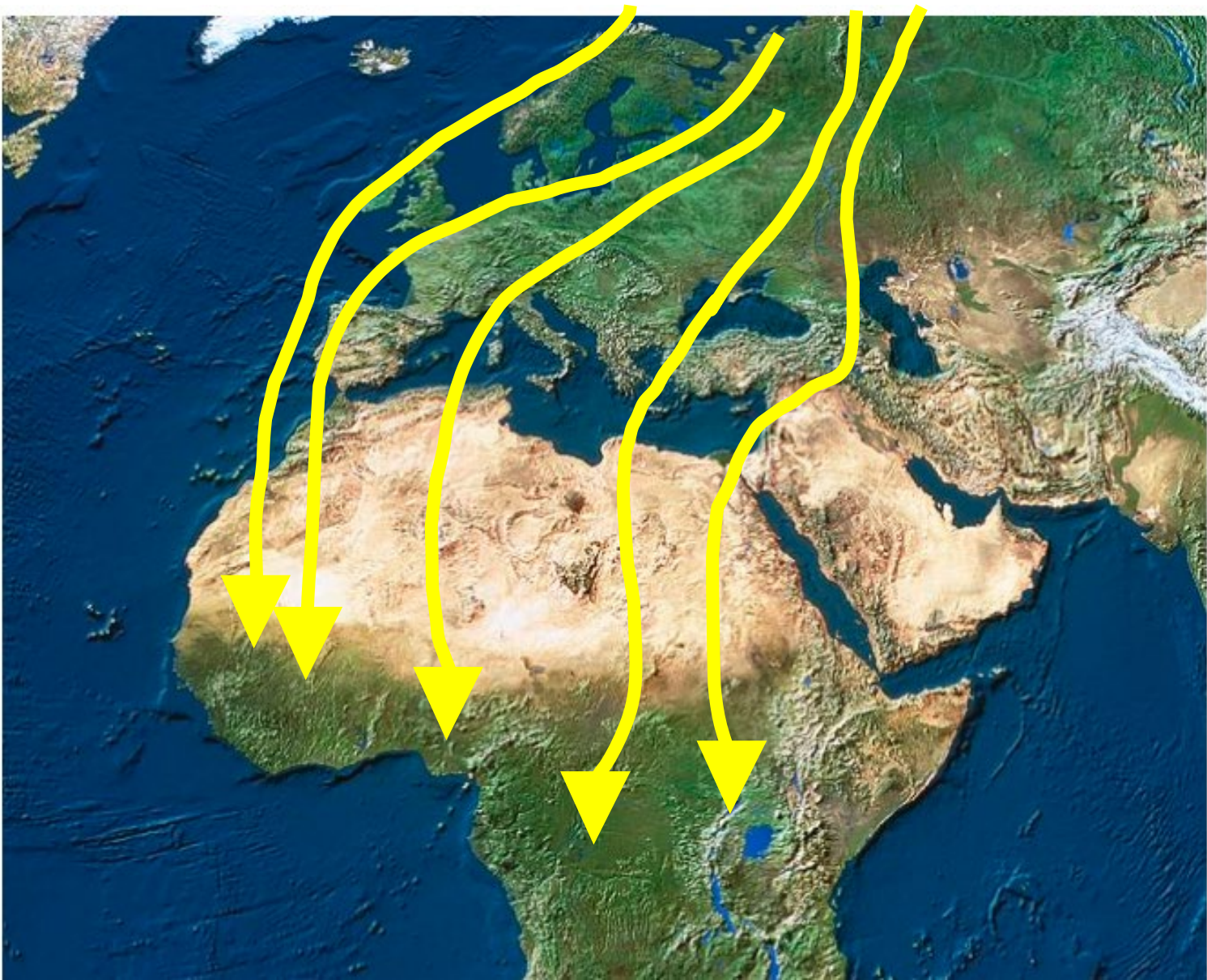
First marine species for metropolitan France to be selected for a NAP

The objectives of this National Action Plan for the Balearic Shearwater (2021-2026) is to define a medium- and long-term strategy which aims to :

- **Organize coherent monitoring of populations** of the species ;
- Implement coordinated actions **favourable** to the restoration of the species and its habitat ;
- Facilitate the integration of the protection of this species in human activities and public policies ;
- Inform and raise awareness among the stakeholders concerned and the general public.



A unique distribution / migration pattern

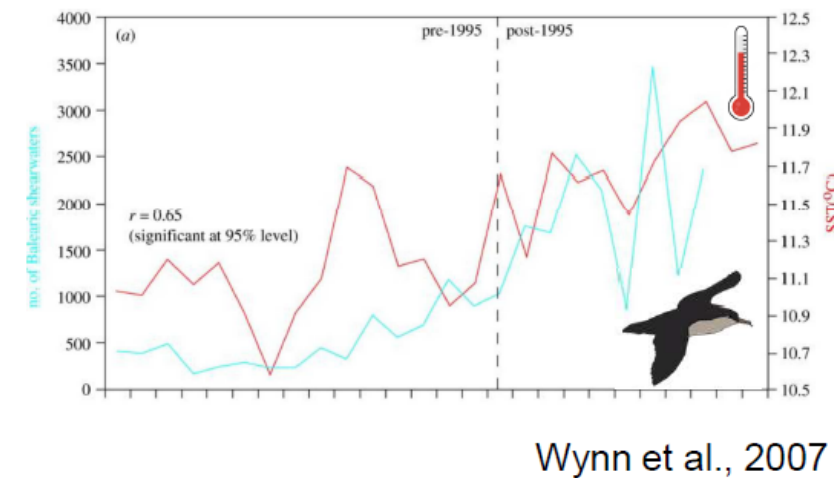


An increasing proportion of birds reaches UK waters *including Channel Islands*

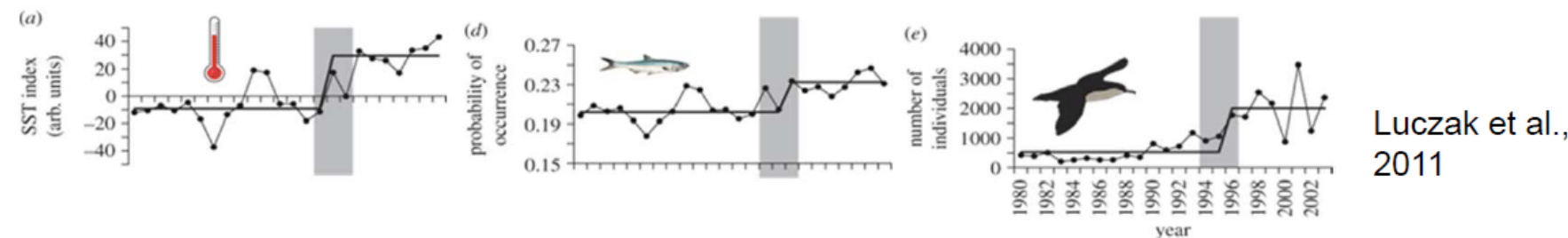


Impacts of climate change

- Sightings data suggest there may be a northwards range shift in the post-breeding migration (Wynn et al., 2007).
- This may be driven by shifts in prey availability resulting from climate change and rising sea temperatures (Luczak et al., 2011).
- An increasing proportion of the world population is migrating to seas off northern France.



*Lewin P., 2024
(Balearic Shearwater workshop)*



2025 = record year for Balearic shearwater numbers in UK

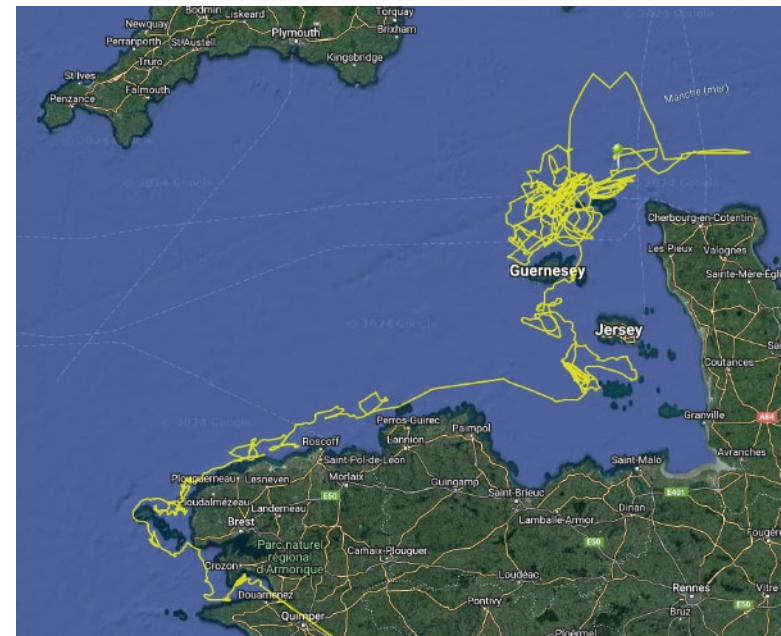
- 5500+ individuals recorded around the UK in August
- Including 1900 individuals in Lyme Bay, Devon (24th July)
- Including 1300 individuals in Westray Island (Orkney Islands)!
- **2000+ individuals in Guernsey waters (July) + 3500 south Jersey on 4th August**



An increasing proportion of birds reaches UK waters including Channel Islands



*GPS biotagging programme of the French national action plan
Several individuals tagged in southern Brittany reached CI waters (2023 + 2024 + 2025)*



-> Need for a dedicated monitoring programme in the Normano-Breton gulf

APRIL 2023: first pan-regional meeting with France, Guernsey, Jersey & Alderney

2023/2024: fund raising, protocol drafting

JUNE 2024: training of surveyors for CI

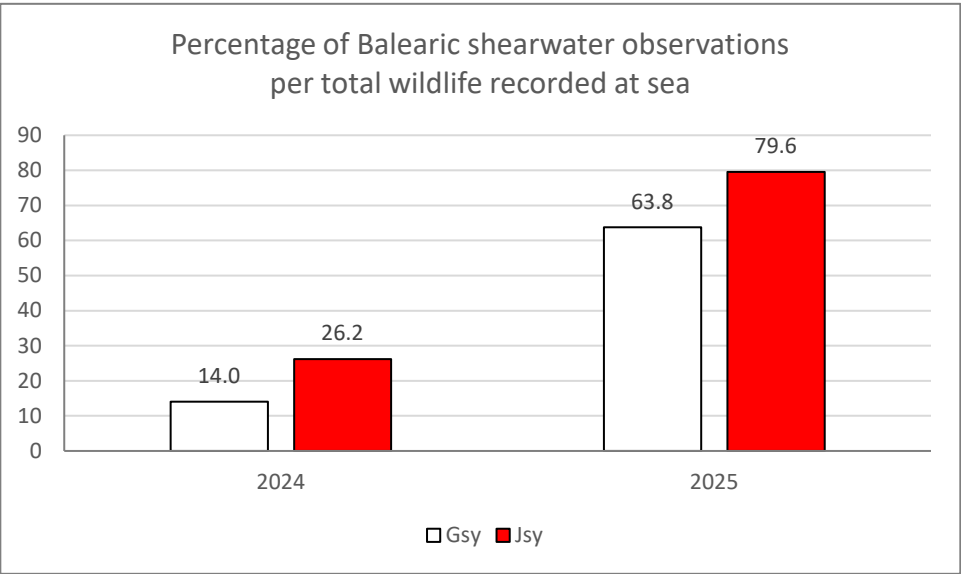
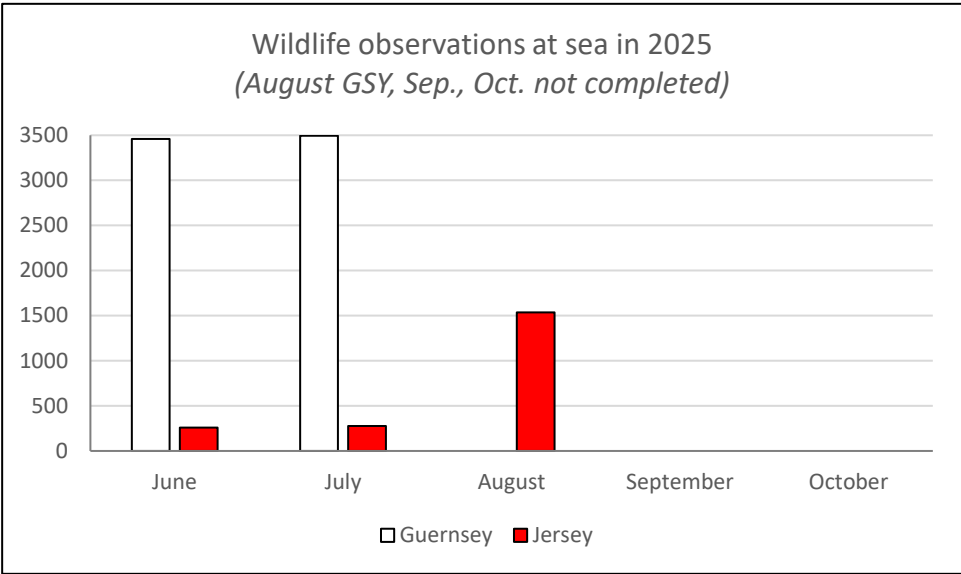
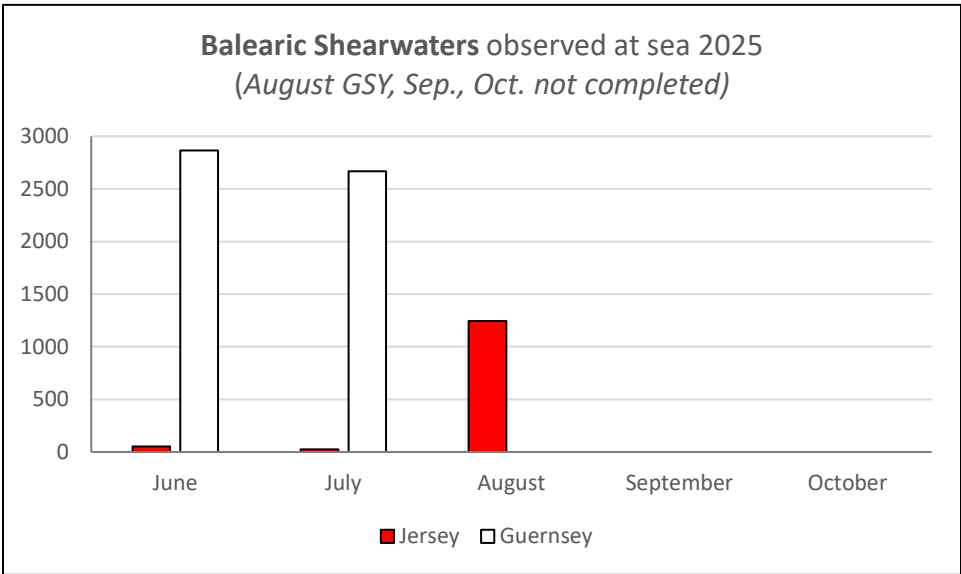
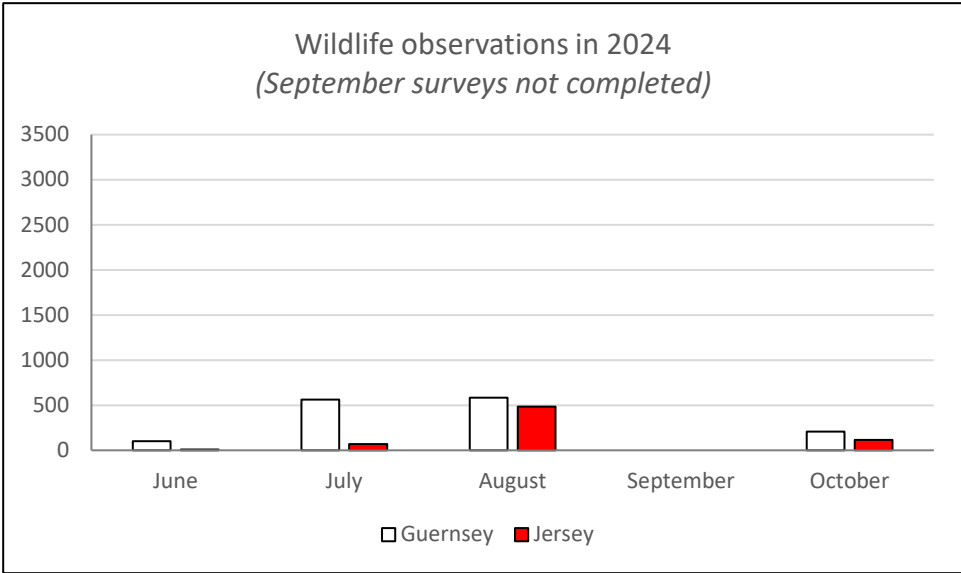
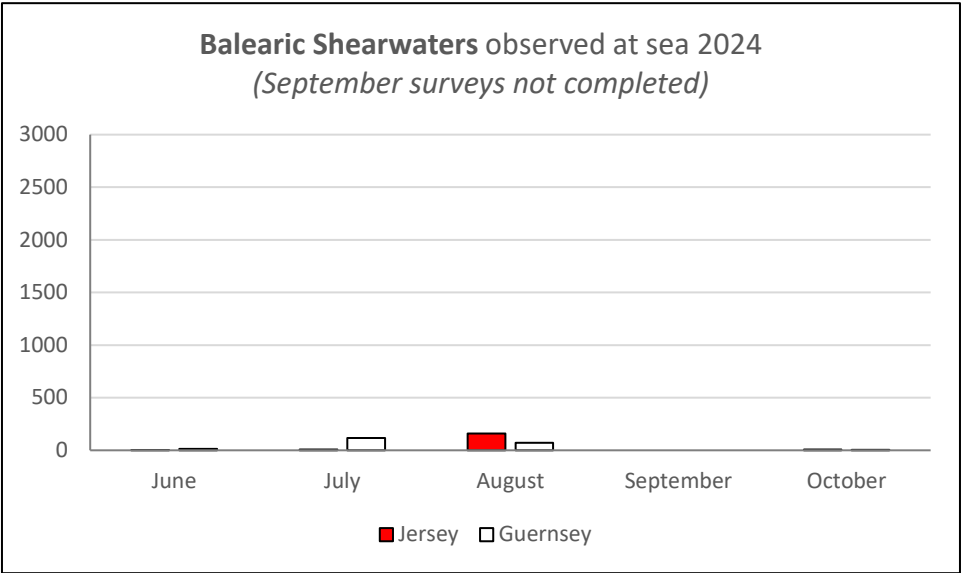
SUMMER 2024 : implementation of the first campaign of surveys

SUMMER 2025 : implementation of the 2nd campaign of surveys

Monitoring programme – Led by CI stakeholders

Boat-based surveys at 2 sites: Jersey & Guernsey

1 survey per site / month from June to October







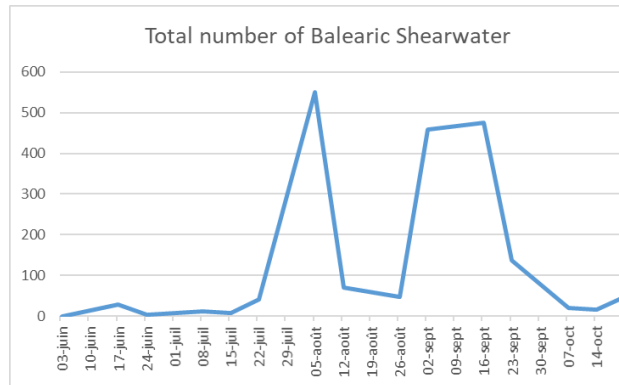
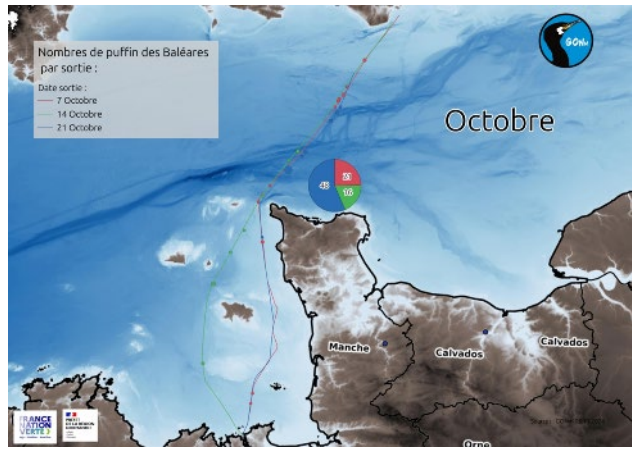
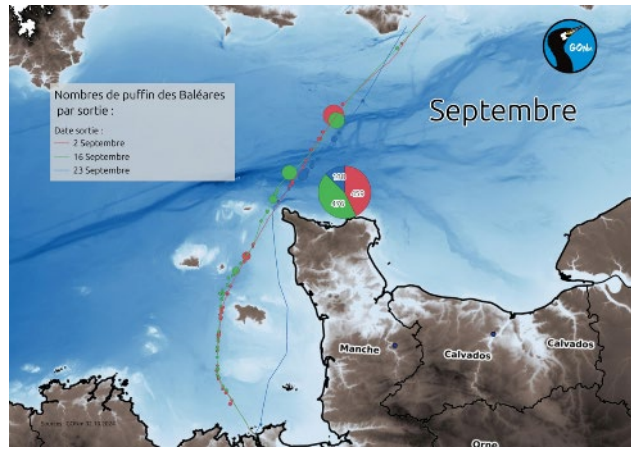
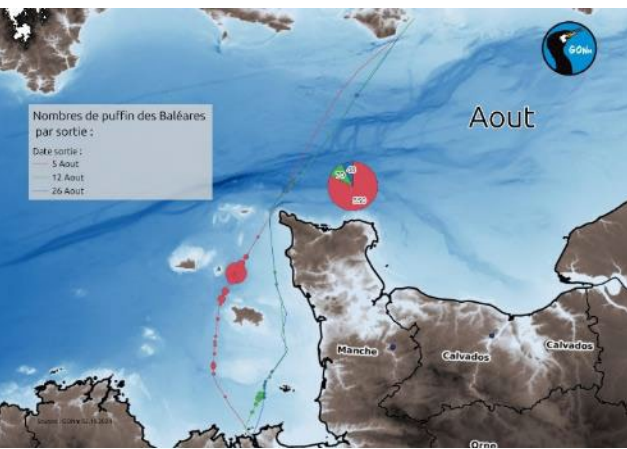
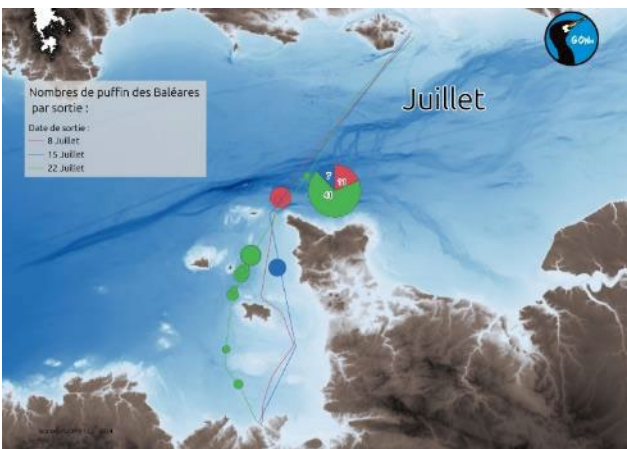
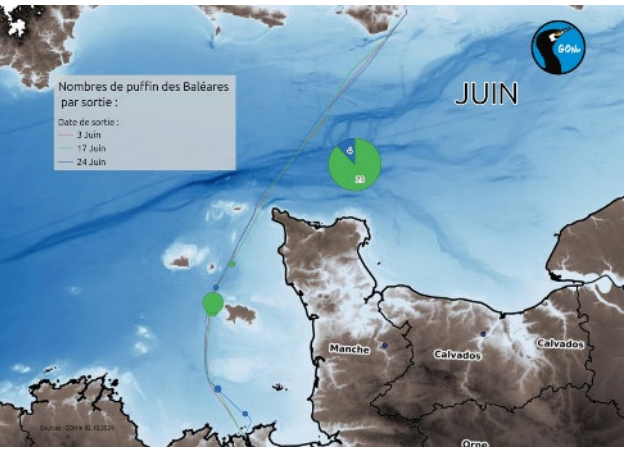
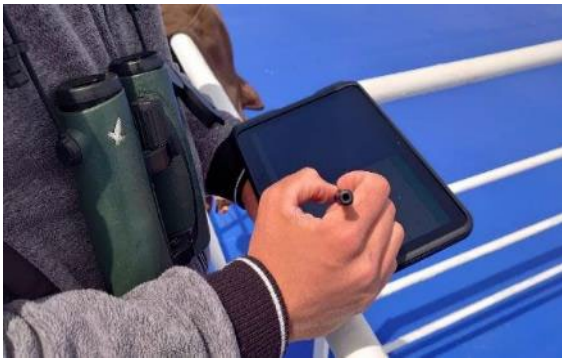


Monitoring programme – Led by french stakeholders

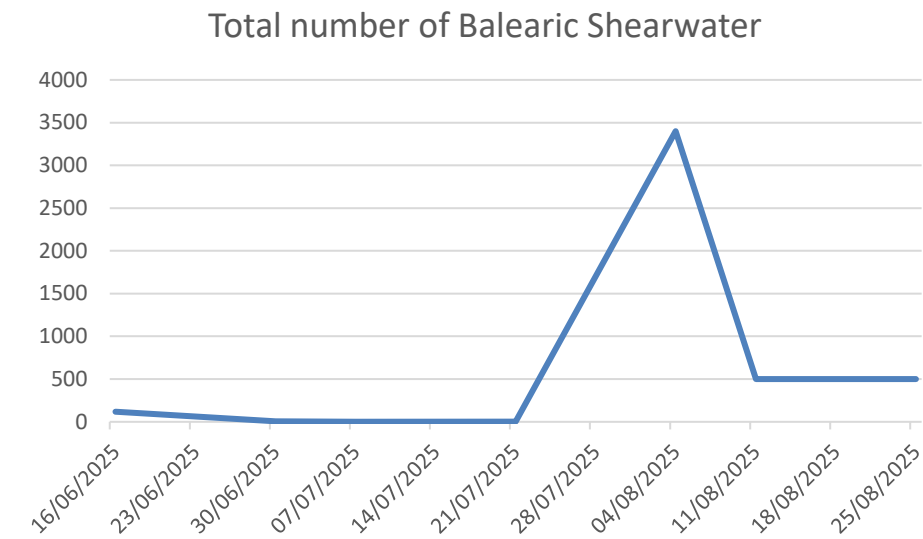
Ferry-based surveys carried out the St-Malo – Portsmouth line
1 survey / decade from June to October



Intermediate results2024



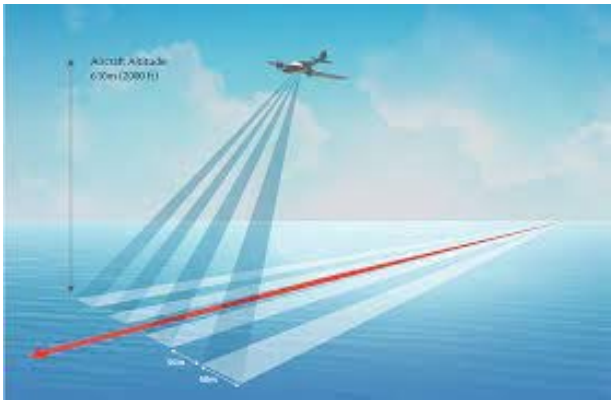
Intermediate results2025



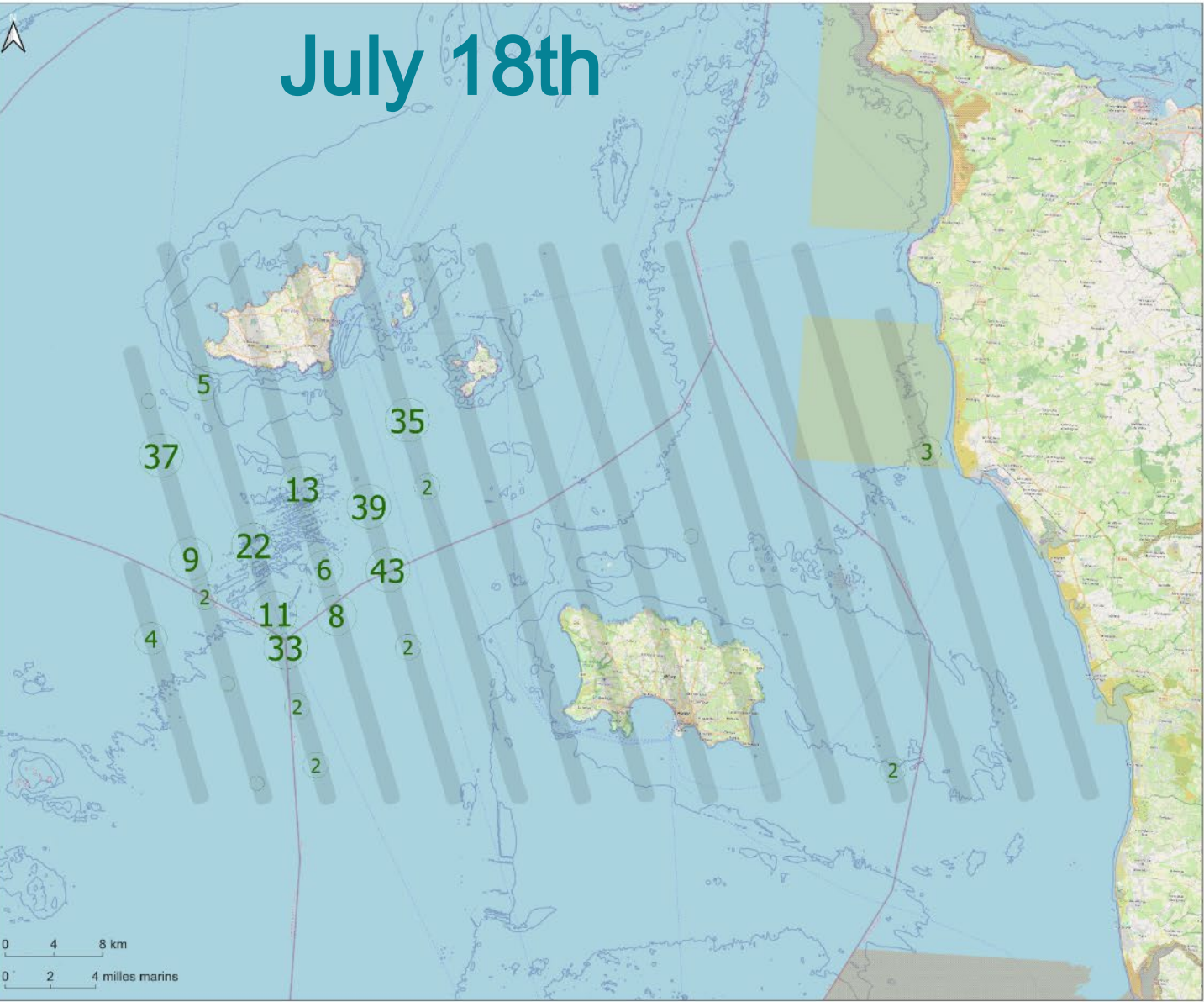
Monitoring programme – Led by french stakeholders

Aerial digital surveys
2 surveys per year: July + September

Intermediate results2024



PNA Puffin des Baléares - Campagne aérienne d'acquisition de connaissances du 18 juillet 2024
Observations de Puffin des Baléares



- Légende
- Individus observés en juillet 2024
 - Transects réalisés
 - SIC / ZSC
 - ZPS



EDITEE LE : 29 / 4 / 2025
Sources des données : XXX
Fonds cartographiques : OSM
Système de coordonnées : EPSG:2154



PNA Puffin des Baléares - Campagne aérienne d'acquisition de connaissances du 28 septembre 2024
Observations de Puffin des Baléares



- Légende
- Individus observés en septembre 2024
 - Transects réalisés
 - Isobathes 20m
 - SIC / ZSC
 - ZPS

EDITEE LE : 29 / 4 / 2025
Sources des données : XXX
Fonds cartographiques : OSM
Système de coordonnées : EPSG:2154



Jersey Tuna Fisheries and Wildlife Code of Conduct July 2025



TUNA FISHERIES AND WILDLIFE CODE OF CONDUCT

PERMITTED



Trolling around the boil and by the edges at 100m from the core.
The bait ball remains active.
Seabirds and other wildlife can carry on feeding.

NOT PERMITTED



Trolling through the middle of the boil.
The bait ball collapses and feeding is disrupted. Disturbing protected wildlife whilst feeding is an offence under the Wildlife Law.

The Wildlife (Jersey) Law 2021 protects all seabirds, bluefin tuna and marine mammals in Jersey waters.

It is an offence to deliberately or recklessly kill, injure, take or disturb protected species.

A licence is required to target bluefin tuna.

To protect other species during tuna fishing, going through a 'feeding boil' with a vessel is not permitted.



©Antoine Chabrolle - MNHN



©Adrien Lambrechts - OFB

PERSPECTIVES

Finalize 2025 monitoring surveys

Data analysis and deliverables: maps, tables, reports

Formalization of results / Balearic Shearwater ecology in Normano-Breton gulf waters : phenology, distribution, numbers, diet, association with tuna, interaction with fisheries

Project of scientific paper : link between Balearic Shearwater distribution/movement and the recent bluefin tuna come back

Identify potential threats : offshore windfarms development, by-catch, disturbance by leisure activity

Keep working on recreational tuna fishing issue with government & regulatory bodies

GPS bio-logging campaign 2026 planned within CI waters



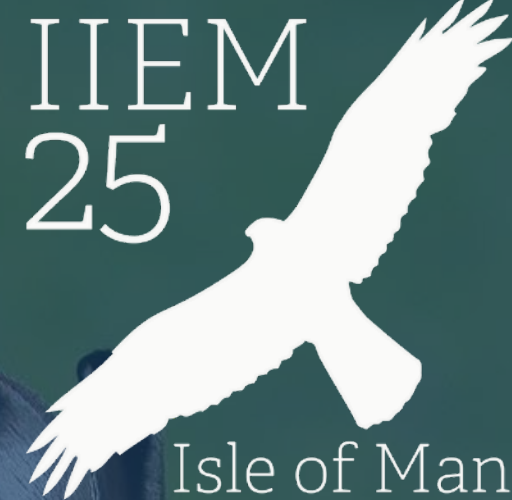
©Adrien Lambrechts - OFB



©Adrien Lambrechts - OFB



©Jérôme Cabelguen - OFB



Thank you!

Adrien Lambrechts— Adrien.lambrechts@ofb.gouv.fr
Cris Sellarescris@nationaltrust.je